

Foliage & Fur Coats

by Beth Reed



Quilt Size: 61" x 71" (1.55m x 1.80m)

Skill Level: Advanced Beginner

Forest Den Quilt

Designed and sold by Denise Russell/Studio e Fabrics
www.studioefabrics.net

Forest Den Quilt Ordering Guide

SKU	Yards	Meters	12 Kits	24 Kits
7655-33	11 1/3 yds	1.22m	2 bolts	3 bolts
7657-33	1/3 yds	0.30m	1 bolt	1 bolt
7658-33	1/2 yds	0.46m	1 bolt	1 bolt
7659-38	1/3 yds	0.30m	1 bolt	1 bolt
7661-77	7/8 yds	0.80m	1 bolt	2 bolts
7662-34	3/8 yds	0.34m	1 bolt	1 bolt
7664-93	1/2 yds	0.46m	1 bolt	1 bolt
Sand-39	7/8 yds	0.80m	2 bolts	3 bolts
Vanilla-46	11 1/3 yds	1.22m	2 bolts	4 bolts
Coffee Bean-50*	5/8 yds	0.57m	1 bolt	2 bolts
Rust-96	1/2 yds	0.46m	1 bolt	2 bolt
Backing Fabric Option				
7660-33	4 1/2 yds	4.11m	4 bolts	8 bolts
* Indicates binding fabric. FQ = 18" x 22" (0.45m x 0.55m) All fabric quantities are based on 15yd bolts unless otherwise indicated.				



7657-33
Chanterelles
Rust



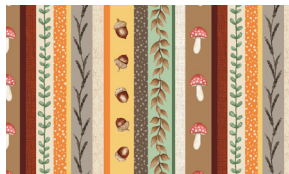
7658-33
Hedgehogs
Cream



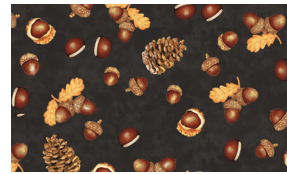
7659-38
Fall Foliage
Brown



7661-77
Squirrels
Teal



7662-34
Mini Stripe
Cream-Multi



7664-93
Acorns and Cones
Charcoal



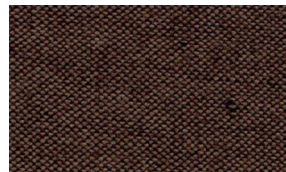
7655-33
Blocks
Brown



Sand-39
Peppered Cottons



Vanilla-46
Peppered Cottons



Coffee Bean-50
Peppered Cottons



Rust-96
Peppered Cottons