

# Ghouls in the Graveyard

• A Free Project Sheet •  
• NOT FOR RESALE •



Featuring fabrics from the **Graveyard Ghouls** collection by **Victoria Hutto** for **STUDIO e fabrics**

## Fabric Requirements

- (A) 7803PG-55 ..... 1 panel  
 (B) True Cheddar-36\*\*  $\frac{2}{3}$  yard (0.61m)  
 (C) 7800G-99 .....  $\frac{3}{8}$  yard (0.34m)  
 (D) 7799G-33 .....  $\frac{3}{8}$  yard (0.34m)  
 (E) White Sugar-9\*\*  $\frac{3}{8}$  yard (0.34m)  
 (F) 7796G-33 .....  $\frac{1}{3}$  yard (0.31m)  
 (G) 7798G-99 .....  $\frac{1}{3}$  yard (0.31m)  
 (H) 7791G-59 ..... 1  $\frac{3}{4}$  yards (1.60m)  
 (I) 1351-Onyx+ .....  $\frac{5}{8}$  yard (0.57m)\*

Backing

- 7795G-99 ..... 3  $\frac{1}{2}$  yards (3.20m)

## Additional Supplies Needed

- Batting 61" x 81"  
 (154.94cm x 205.74cm)  
 (Recommended:  
 Air Lite® Colour Me 100% Cotton)  
 Piecing and sewing thread  
 Quilting and sewing supplies

## Project Information

- Quilt by Matthew Pridemore  
 Finished Quilt Size 53" x 73"  
 (134.62cm x 185.42cm)  
 Skill Level: Advanced Beginner

- \* Includes Binding  
 \*\* Peppered Cottons Collection  
 + Just Color! Collection



## Fabrics in the Collection



Patchwork 24 inch  
Multi – 7791G-59



Border Stripe 8 inch  
Multi – 7792G-59



Tossed Houses 12 inch Half Drop  
Plum – 7793G-55



Tossed Mummies 12 inch Half Drop  
Orange – 7794G-33



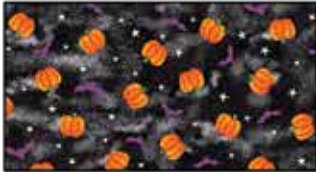
Tossed Skeletons 8 inch  
Black – 7795G-99



Tossed Witches 8 inch Half Drop  
Orange – 7796G-33



Tossed Ghosts 6 inch Half Drop  
Plum – 7797G-55



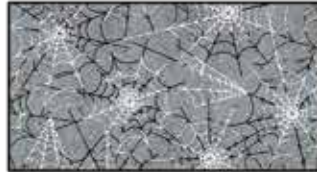
Tossed Pumpkins and Bats 6 inch  
Black – 7798G-99



Tossed Spiders 6 inch Half Drop  
Orange – 7799G-33



Tossed Dots and Stars 6 inch  
Black – 7800G-99



Spiderweb 8 inch Half Drop  
Gray – 7801G-90



6 10 inch Block 24 inch  
Black – 7802G-99



24 x 44 Panel  
Plum – 7803PG-55

Select Fabrics from  
Peppered Cottons and Just Color!



Peppered Cottons  
True Cheddar  
True Cheddar-36



Peppered Cottons  
White Sugar  
White Sugar-9



Just Color!  
Onyx  
1351-Onyx

## Cutting

### Cutting Instructions

*Please note: All strips are cut across the width of fabric (WOF) from selvage to selvage edge unless otherwise noted.*

WOF= Width of Fabric • LOF = Length of Fabric

#### **Fabric A (7803PG-55 24 x 44 panel – Plum):**

- Fussy cut (1) 23" x 42 ½" rectangle, centered on the panel.

#### **Fabric B (True Cheddar-36 Peppered Cottons – True Cheddar), cut:**

- (2) 2" x 42 ½" WOF strips, piece as needed.
- (2) 2" x 26" WOF strips.
- (3) 2" x WOF strips. Sew the strips together end to end with diagonal seams and cut (2) 2" x 56 ½" strips.
- (2) 2" x 39 ½" WOF strips.

#### **Fabric C (7800G-99 Tossed Dots and Stars 6 inch – Black), cut:**

- (2) 4 ½" x WOF strips, sub-cut (17) 4 ½" squares.

#### **Fabric D (7799G-33 Tossed Spiders 6 inch half drop – Orange), cut:**

- (2) 4 ½" x WOF strips, sub-cut (17) 4 ½" squares.

#### **Fabric E (White Sugar-9 Peppered Cottons – White Sugar), cut:**

- (4) 2 ½" x WOF strips, sub-cut (34) 2 ½" x 4 ½" strips.

#### **Fabric F (7796G-33 Tossed Witches 8 inch half drop – Orange), cut:**

- (1) 7 ⅞" x WOF strip, sub-cut (2) 7 ⅞" squares and (2) 6 ⅞" squares.

#### **Fabric G (7798G-99 Tossed Pumpkins and Bats 6 inch – Black), cut:**

- (1) 7 ⅞" x WOF strip, sub-cut (2) 7 ⅞" squares and (2) 6 ⅞" squares.

#### **Fabric H (7791G-59 Patchwork 24 inch – Multi), cut:**

- (2) 7 ½" x 59 ½" LOF strips.
- From the remaining fabric, cut (2) 7 ½" x 39 ½" strips, piece as needed.

#### **Fabric I (1351-Onyx Just Color! – Onyx), cut:**

- (7) 2 ½" x WOF strips for the binding.

#### **Backing 7795G-99 Tossed Skeletons 8 inch – Black), cut:**

- (2) 61" x WOF strips. Sew the strips together and trim to 61" x 81" to make the back.

## Sewing

Sew using a  $\frac{1}{4}$ " seam allowance with right sides together (RST) unless otherwise indicated. Always press towards the darker fabric while assembling, unless otherwise noted by the arrows.

### Block Assembly

**Note: The arrows in figures represent the fabric print direction. Pay attention to the fabric and unit orientations when assembling the various components.**

1. Sew (1)  $2'' \times 42\frac{1}{2}''$  Fabric B strip to each side of the  $23'' \times 42\frac{1}{2}''$  Fabric A rectangle. Sew (1)  $2'' \times 26''$  Fabric B strip to the top and to the bottom of the Fabric A rectangle to make the Center Block (Fig. 1). **Trim the block to measure  $24\frac{1}{2}'' \times 44\frac{1}{2}''$ .**

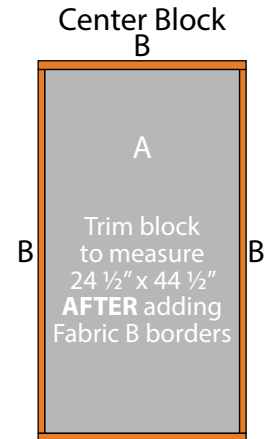


Fig. 1 B

2. Sew (1)  $2\frac{1}{2}'' \times 4\frac{1}{2}''$  Fabric E strip to the bottom of (1)  $4\frac{1}{2}''$  Fabric C square lengthwise to make (1) Unit 1 rectangle (Fig. 2). Repeat to make (17) Unit 1 rectangles total.

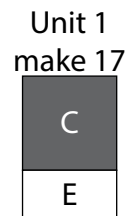


Fig. 2

3. Sew (1)  $2\frac{1}{2}'' \times 4\frac{1}{2}''$  Fabric E strip to the bottom of (1)  $4\frac{1}{2}''$  Fabric D square lengthwise to make (1) Unit 2 rectangle (Fig. 3). Repeat to make (17) Unit 2 rectangles total.

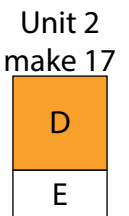


Fig. 3

4. Place (1)  $6\frac{7}{8}''$  Fabric F square on top of (1)  $6\frac{7}{8}''$  Fabric G square, right sides together. Draw a line across the diagonal of the top square (Fig. 4). Sew  $\frac{1}{4}''$  away from each side of the drawn diagonal line (Fig. 4). Cut the (2) squares apart on the drawn diagonal line (Fig. 5) to make (2) half-square triangles. Trim the half-square triangles to measure  $6\frac{1}{2}''$  square to make (2) Unit 3 squares (Fig. 6). Repeat to make (4) Unit 3 squares total.

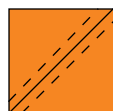


Fig. 4



Fig. 5

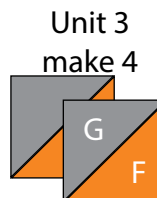


Fig. 6



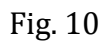
Fig. 7

5. Place (1)  $7\frac{7}{8}''$  Fabric F square on top of (1)  $7\frac{7}{8}''$  Fabric G square, right sides together. Draw a line across the diagonal of the top square. Sew  $\frac{1}{4}''$  away from each side of the drawn diagonal line. Cut the (2) squares apart on the drawn diagonal line to make (2) half-square triangles. Trim the half-square triangles to measure  $7\frac{1}{2}''$  square to make (2) Unit 4 squares (Fig. 7). Repeat to make (4) Unit 4 squares total.

7. Sew together (6) Unit 2 rectangles and (5) Unit 1 rectangle, lengthwise and alternating them from top to bottom, to make the Right Side Border (Fig. 9).



Fig. 9



Bottom Border

Fig. 11

*(Follow the Quilt Layout while assembling the quilt top.)*

11. Sew the Top Border and Bottom Border to the top and bottom of the Center Block.

13. Sew (1) 7 1/2" x 59 1/2" Fabric H strip to each side of the Center Block.

14. Sew (1) 7 ½" Unit 4 square to each end of (1) 7 ½" x 39 ½" Fabric H strip. Repeat to make a second strip. Sew the strips to the top and to the bottom of the Center Block to make the quilt top.

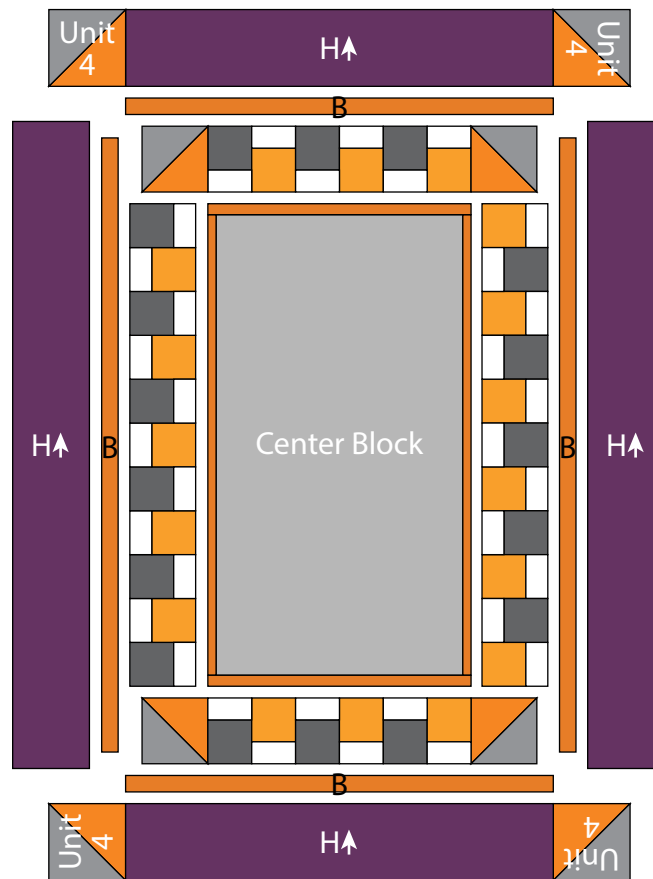
## Layering, Quilting and Finishing

15. Press the quilt top and 61" x 81" backing well. Layer backing (wrong side up), batting, pressed quilt top (right side up) and baste. Quilt as desired and trim excess batting and backing when quilting is complete.

## Binding

16. Cut the ends of the (7) Fabric I binding strips at a 45-degree angle and sew end to end to make (1) continuous piece of binding. Fold in half lengthwise and press wrong sides together.

17. Sew the binding to the front of the quilt, raw edges together. Turn the folded edge to the back, and hand stitch in place.



Quilt Layout

*Every effort has been made to ensure that all projects are error free. All the information is presented in good faith, however no warranty can be given nor results guaranteed as we have no control over the execution of instructions. Therefore, we assume no responsibility for the use of this information or damages that may occur as a result. When errors are brought to our attention, we make every effort to correct and post a revision as soon as possible. Please make sure to check [www.studioefabrics.net](http://www.studioefabrics.net) for pattern updates prior to starting the project. We also recommend that you test the project prior to cutting for kits. Finally, all free projects are intended to remain free to you and are **not for resale**.*