

Harmony Up-Close Quilt



Finished Size: **66" x 66" (1.68m x 1.68m)**

Finished Block Size: **6" x 6" (15.24cm x 15.24cm)**

Fabric Collection Name and Fabric Designer: **Behind Blue Eyes by Funny Girl**

Technique: **Pieced**

Designed by: **Denise Russell of Pieced Brain**

Skill Level: **Advanced Beginner**

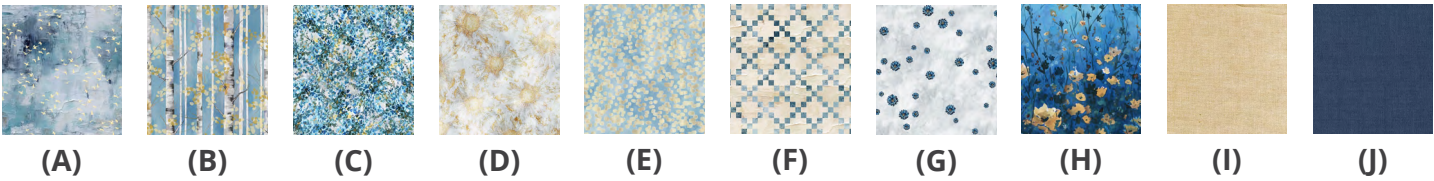
Tech Edited by: **Julie Kentner**

Harmony Up-Close Quilt

Fabric Requirements

DESIGN	COLOR	ITEM ID	YARDAGE
(A) Plaster with Birds	Slate	8648-79	7⁄8 yard (0.80m)
(B) Birch Trees	Slate	8649-79	1 yard (0.91m)
(C) Floral Spray	Cyan	8650-77	½ yard (0.46m)
(D) Burst	Pearl	8651-11	½ yard (0.46m)
(E) Golden Dots	Slate	8652-79	2⁄3 yard (0.61m)
(F) Plaster 9-patch	Cream	8653-14	½ yard (0.46m)
(G) Tiny Flower Toss	Pearl	8654-11	5⁄8 yard (0.57m)
(H) Reaching Floral	Peacock	8657-73	2⁄3 yard (0.61m)
(I) Peppered Cottons	Sand	Sand-39	¼ yard (0.23m)
(J) Peppered Cottons	Storm Cloud	Storm Cloud-87*	1 1⁄3 yards (1.22m)

* includes binding



Backing (Purchased Separately)

44" (1.12m) wide			
Bloom Toss	Ice	8647-17	4 ¼ yards (3.89m)
OR			
108" (2.74m) wide			2 ⅞ yards (1.94m)



Backing
44"

Additional Materials:

- 100% Cotton Thread
- 74" x 74" (1.88m x 1.88m) Batting

All possible care has been taken to ensure the accuracy of this pattern. We are not responsible for printing errors or the manner in which individual work varies.
Please read the instructions carefully before starting this project. If kitting it is recommended a sample is made to confirm accuracy.
All free projects are intended to remain free and are not for resale.

Harmony Up-Close Quilt

Cutting

Notes:

- Please check www.studioefabrics.net for pattern updates prior to starting the project.
- All strips are cut across the width of fabric (WOF) from selvedge to selvedge edge unless otherwise noted.

Fabric A, cut:

(4) 6½" x WOF

Fabric B, cut:

(5) 6½" x WOF

Fabrics C and F, from each cut:

(2) 6½" x WOF; subcut
(12) 6½" squares

Fabric D, cut:

(1) 7" x WOF; subcut
(4) 7" squares
(1) 6½" x WOF; subcut
(4) 6½" squares

Fabric E, cut:

(1) 7" x WOF; subcut
(4) 7" squares
(2) 6½" x WOF; subcut
(8) 6½" squares

Fabric G, cut:

(1) 7¼" x WOF; subcut
(2) 7¼" squares; cut twice diagonally
(triangles V)
(2) 6⅞" squares; cut once diagonally (triangles W)
(1) 7" x WOF; subcut
(4) 7" squares

Fabric H, cut:

(1) 18½" x WOF; subcut
(1) 18½" square

Fabric I, cut:

(1) 7¼" x WOF; subcut
(1) 7¼" square; cut twice diagonally (triangles X)

Fabric J, cut:

(1) 7¼" x WOF; subcut
(1) 7¼" square; cut twice diagonally (triangles Y)
(4) 6½" squares
(2) 7" x WOF; subcut
(4) 7" squares
(2) 6⅞" squares; cut once diagonally (triangles Z)
(8) 2½" x WOF (Binding)

All possible care has been taken to ensure the accuracy of this pattern. We are not responsible for printing errors or the manner in which individual work varies.

Please read the instructions carefully before starting this project. If kitting it is recommended a sample is made to confirm accuracy.

All free projects are intended to remain free and are not for resale.

Harmony Up-Close Quilt

SEWING and QUILT TOP ASSEMBLY

Notes:

- All seam allowances are $\frac{1}{4}$ " (0.64cm).
- Sew pieces with right sides together (RST) using neutral or coordinating thread.
- Press seam allowances open unless otherwise indicated.
- Follow the Quilt Layout Diagram (page 10) while assembling the quilt top.

Half-square triangles

1. Draw a diagonal line on the wrong side of (4) 7" **Fabric E** squares. With right sides together (RST), layer the marked squares atop each of the (4) 7" **Fabric G** squares. Stitch $\frac{1}{4}$ " away from each side of the diagonal line, cutting apart on the drawn line. Press each unit open with seams toward the darker fabric and trim dog ears. Trim to $6\frac{1}{2}$ " x $6\frac{1}{2}$ " square. Repeat to make (8) $6\frac{1}{2}$ " **Fabric E/G** half-square triangles (HST). Repeat this step with (4) 7" **Fabric D** and **Fabric J** squares to make (8) $6\frac{1}{2}$ " **Fabric D/J** half-square triangles (HST) (**HST, Fig. 1, Fig. 1a**).

HST

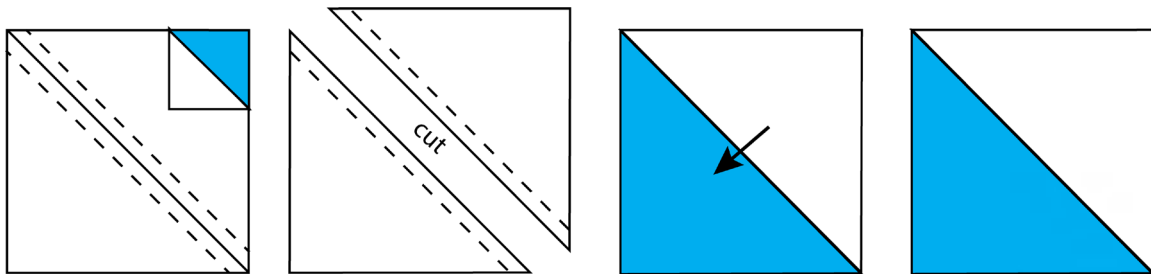


Fig. 1

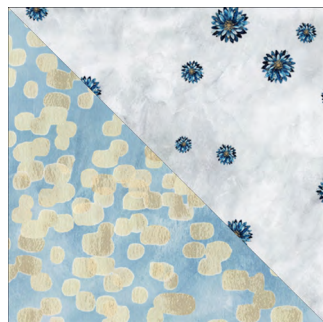


Fig. 1a



All possible care has been taken to ensure the accuracy of this pattern. We are not responsible for printing errors or the manner in which individual work varies.

Please read the instructions carefully before starting this project. If kitting it is recommended a sample is made to confirm accuracy.

All free projects are intended to remain free and are not for resale.

Harmony Up-Close Quilt

2. Sew (1) **Fabric G triangle V** to (1) **Fabric I triangle X**. Press seams toward the darker fabric. Sew (1) **Fabric G triangle W** to the unit. Press seam toward **Fabric G**. Repeat to make (4) **Fabric G/I** 6½" units. Repeat this step with (4) **Fabric J triangle Y**, (4) **Fabric G triangle V**, and (4) **Fabric J triangle Z** to make (4) **Fabric J/G** 6½" units (**Fig. 2, Fig. 2a**).

Fig. 2

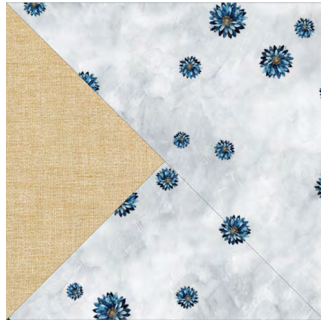
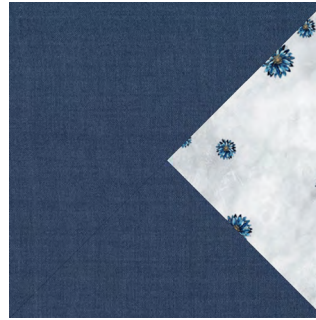
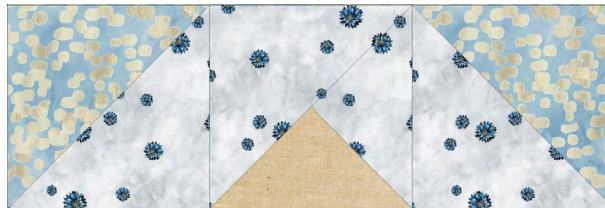


Fig. 2a



3. Noting fabric orientation, sew (1) step 2 unit between (2) step 1 **Fabric E/G** half-square triangles. Press seams away from the center. Repeat to make (4) rows (**Fig 3**).

Fig. 3



All possible care has been taken to ensure the accuracy of this pattern. We are not responsible for printing errors or the manner in which individual work varies.

Please read the instructions carefully before starting this project. If kitting it is recommended a sample is made to confirm accuracy.

All free projects are intended to remain free and are not for resale.

Harmony Up-Close Quilt

4. Sew (2) step 3 rows to opposite sides of the 18½" **Fabric H** square. Press seams toward the center. Sew (1) 6½" **Fabric D** square to the short ends of the remaining step 3 rows. Press seams away from the center. Sew (1) row to the top and (1) row to the bottom of the **Fabric H** square. Press seams in one direction (**Fig 4, Fig. 4a, Fig. 4b**).

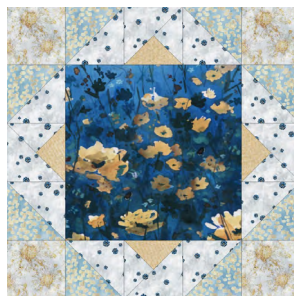
Fig. 4



Fig. 4a



Fig. 4b



All possible care has been taken to ensure the accuracy of this pattern. We are not responsible for printing errors or the manner in which individual work varies.

Please read the instructions carefully before starting this project. If kitting it is recommended a sample is made to confirm accuracy.

All free projects are intended to remain free and are not for resale.

Harmony Up-Close Quilt

5. Noting fabric orientation, sew (1) step 2 **Fabric J/G** unit between (2) 6½" **Fabric E** squares. Press seams away from the center. Add (1) step 1 **Fabric D/J** unit to each end. Press. Repeat to make (4) rows (**Fig. 5, Fig. 5a**).

Fig. 5

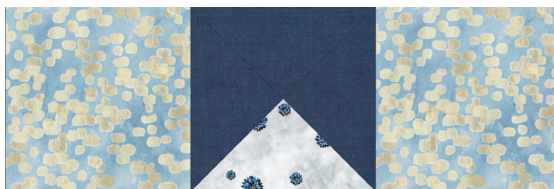
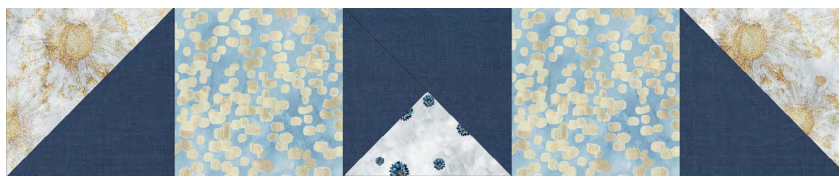


Fig. 5a



6. Sew (2) step 5 rows to opposite sides of the step 4 unit. Press seams toward the center. Add (1) 6½" **Fabric J** square to the ends of the remaining step 5 rows. Press seams away from the center. Sew (1) row to the top and (1) row to the bottom of the center. Press (**Fig. 6**).

Fig. 6



All possible care has been taken to ensure the accuracy of this pattern. We are not responsible for printing errors or the manner in which individual work varies.

Please read the instructions carefully before starting this project. If kitting it is recommended a sample is made to confirm accuracy.

All free projects are intended to remain free and are not for resale.

Harmony Up-Close Quilt

7. Trim (4) 6½" x WOF **Fabric A** strips to 30½" long. Sew (1) 6½" **Fabric F** square to each short end of the strips. Press seams away from the center. Repeat to make (4) rows. Sew (2) rows to opposite sides of the quilt center, pressing seams as before. Sew (1) 6½" **Fabric C** square to the ends of the remaining 6½" **Fabric A** strips. Sew (1) row to the top and (1) row to the bottom of the quilt center. Press (**Fig. 7 - Fig. 7c**).

Fig. 7



Fig. 7a



Fig. 7b



Fig. 7c



All possible care has been taken to ensure the accuracy of this pattern. We are not responsible for printing errors or the manner in which individual work varies.

Please read the instructions carefully before starting this project. If kitting it is recommended a sample is made to confirm accuracy.

All free projects are intended to remain free and are not for resale.

Harmony Up-Close Quilt

8. Sew together (5) 6½" x WOF **Fabric B** strips end to end using diagonal seams. Subcut into (4) 6½" x 42½" strips. Sew (1) 6½" **Fabric C** square to each end of the strips. Press. Repeat to make (4) rows. Sew (2) rows to opposite sides of the quilt center and press. Sew (1) 6½" **Fabric F** square to the ends of the remaining 6½" **Fabric B** strips. Sew (1) row to the top and (1) row to the bottom of the quilt center to complete the quilt. Press (**Fig 8 - Fig. 8b**).

Fig. 8



Fig. 8a



Fig. 8b



Finishing

9. Sew together (8) 2½" x WOF **Fabric J** binding strips end to end using diagonal seams. Press seams open. Press the binding strip in half with the wrong sides together and set aside until the quilt is ready for binding.
10. Layer the backing (wrong side up), batting, and quilt top (right side up). Baste the layers together and quilt as desired. Trim excess batting and backing even with the top of the quilt.
11. Leaving an 8" tail of binding and beginning along an edge of the quilt top, matching the raw edges of the binding to the raw edges of the quilt. Sew the binding to the outside edge around all four sides and miter corners. Stop sewing approximately 12" from where you started and backstitch.
12. Lay both loose ends of the binding flat along the quilt edge. Where these two loose ends meet, fold them back onto themselves and press to form a crease. Using this crease as your stitching line, sew the two open ends of the binding together, with the right sides matching. Trim the seam to ¼" and press it open. Finish sewing the binding to the quilt.
13. Turn the binding over the raw edge to the back of the quilt and hand or machine stitch in place.

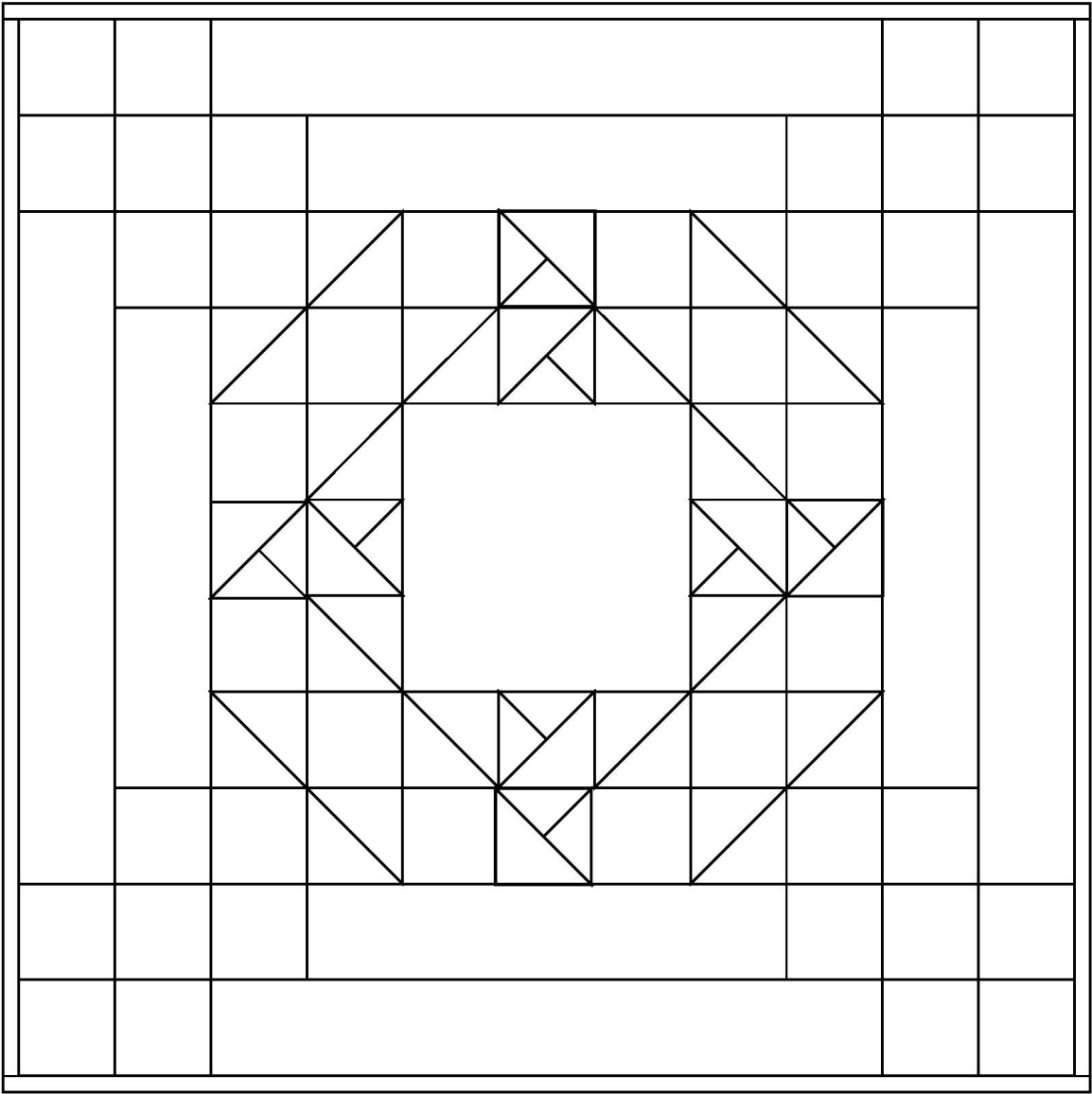
All possible care has been taken to ensure the accuracy of this pattern. We are not responsible for printing errors or the manner in which individual work varies.

Please read the instructions carefully before starting this project. If kitting it is recommended a sample is made to confirm accuracy.

All free projects are intended to remain free and are not for resale.

Harmony Up-Close Quilt

Quilt Layout



*All possible care has been taken to ensure the accuracy of this pattern. We are not responsible for printing errors or the manner in which individual work varies.
Please read the instructions carefully before starting this project. If kitting it is recommended a sample is made to confirm accuracy.
All free projects are intended to remain free and are not for resale.*