

**studio<sup>e</sup>**  
F A B R I C S

# Marsha, Marsha, Marsha

by Nancy Smith



Quilt Size: 66" x 72" (1.68m x 1.83m)

Skill Level: Advanced Beginner

## A Parallel Universe Quilt

Designed by Leigh Headington  
[www.thesweetteagirls.com](http://www.thesweetteagirls.com)

## A Parallel Universe Quilt Ordering Guide

SKU	Yards	Meters	6 Kits	12 Kits
 9387-69	3/4 yds	0.69m	1 bolt	1 bolt
 9389-63	2 3/8 yds	2.17m	1 bolt	2 bolts
 9390-53	2/3 yds	0.61m	1 bolt	1 bolt
 9392P-53	2 yds	1.83m	1 bolt	2 bolts
 1351-Grape	1/2 yds	0.46m	1 bolt	1 bolt
 1351-Lime	1/3 yds	0.30m	1 bolt	1 bolt

### 44" Backing Fabric Option

9386-64	4 yds	3.66m	2 bolts	4 bolts
---------	-------	-------	---------	---------

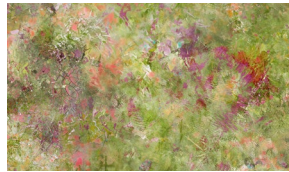
\* Indicates binding fabric.

FQ = 18" x 22" (0.45m x 0.55m)

All fabric quantities are based on 15yd bolts unless otherwise indicated.



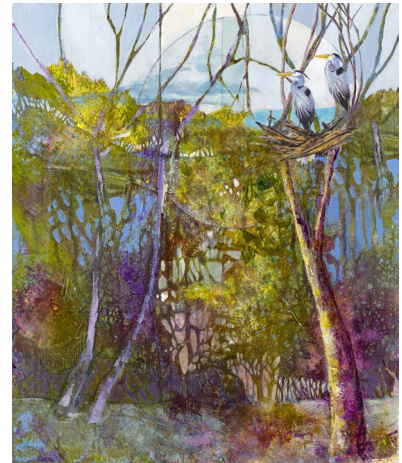
9387-69  
Bayou  
Jade



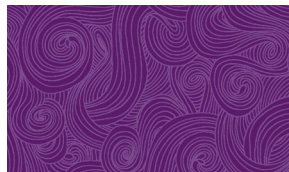
9389-63  
Tree Texture  
Lime



9390-53  
Treeline  
Pansy



9392P-53  
Heron Landscape Panel  
Pansy



1351-Grape  
Just Color!  
Grape



1351-Lime  
Just Color!  
Lime