

studio^e
F A B R I C S

Marsha, Marsha, Marsha

by Nancy Smith



Quilt Size: 56" x 63" (1.42m x 1.60m)

Skill Level: Advanced Beginner

Rays of Hope Quilt
Designed by Laureen Smith
www.tourmalinethymequilts.com

Rays of Hope Quilt Ordering Guide

SKU	Yards	Meters	6 Kits	12 Kits
 9386-64	5/8 yds	0.57m	1 bolt	1 bolt
 9387-69	1yd	0.91m	1 bolt	1 bolt
 9388-16	3/4 yds	0.69m	1 bolt	1 bolt
 9389-63	1/3 yds	0.30m	1 bolt	1 bolt
 9390-53	1/2 yds	0.46m	1 bolt	1 bolt
 9392P-53	1yd	0.91m	1 bolt	1 bolt
 1351-Plum	1yd	0.91m	1 bolt	1 bolt

44" Backing Fabric Option

9383-54	4 yds	3.66m	2 bolts	4 bolts
---------	-------	-------	---------	---------

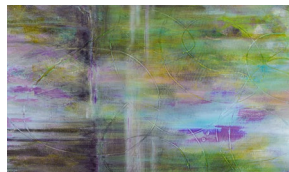
* Indicates binding fabric.

FQ = 18" x 22" (0.45m x 0.55m)

All fabric quantities are based on 15yd bolts unless otherwise indicated.



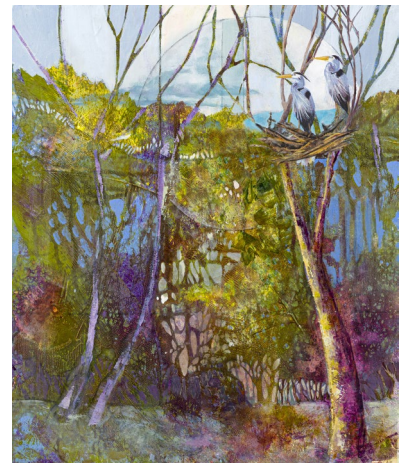
9386-64
Scenic Patchwork
Matcha



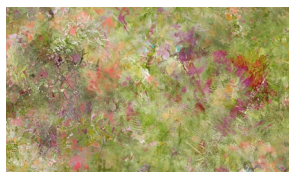
9387-69
Bayou
Jade



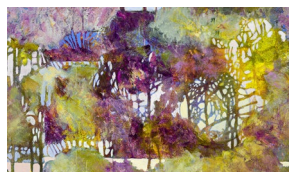
9388-16
Sky Texture
Pistachio



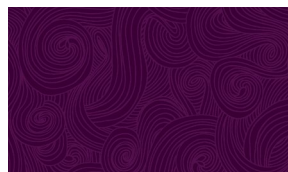
9392P-53
Heron Landscape Panel
Pansy



9389-63
Tree Texture
Lime



9390-53
Treeline
Pansy



1351-Plum
Just Color!
Plum