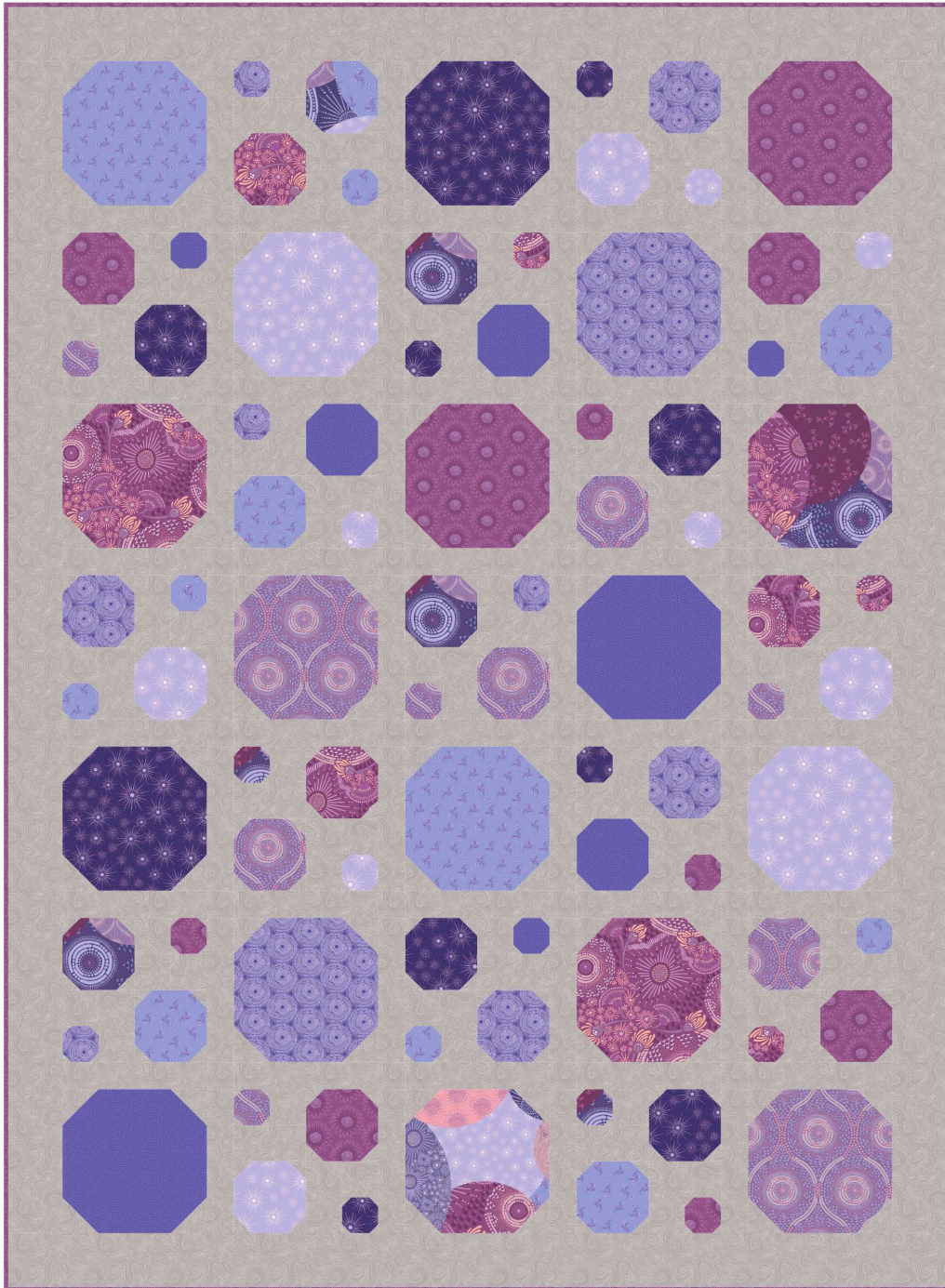


Moon Rise

by Bella Caronia



Quilt Size: 50" x 68" (1.27m x 1.73m)

Skill Level: Advanced Beginner

Effervescence Quilt

Designed by Christine Van Buskirk of Christine Quilts
www.christinequilts.com

Effervescence Quilt Ordering Guide

SKU	Yards	Meters	6 Kits	12 Kits
 9476-52	FQ	0.23m	1 bolt	1 bolt
 9477-52*	FQ + 1/2 yds	0.69m	1 bolt	1 bolt
 9478-15	FQ	0.23m	1 bolt	1 bolt
 9479-53	FQ	0.23m	1 bolt	1 bolt
 9480-55	FQ	0.23m	1 bolt	1 bolt
 9481-57	FQ	0.23m	1 bolt	1 bolt
 9484-50	FQ	0.23m	1 bolt	1 bolt
 9484-59	FQ	0.23m	1 bolt	1 bolt
 9485-57	FQ	0.23m	1 bolt	1 bolt
 1351-Lava	2 3/8 yds	2.17m	1 bolt	2 bolts

44" Backing Fabric Option

9482-53	4 1/4 yds	3.89m	2 bolts	4 bolts
---------	-----------	-------	---------	---------

108" Backing Fabric Option

9486-57	2 1/8 yds	1.95m	1 bolt	2 bolts
---------	-----------	-------	--------	---------

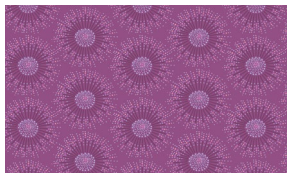
* Indicates binding fabric.

FQ = 18" x 22" (0.45m x 0.55m)

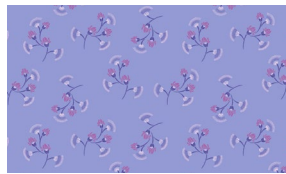
All fabric quantities are based on 15yd bolts unless otherwise indicated.



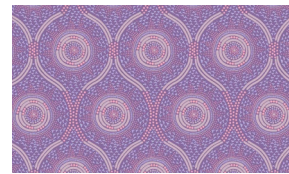
9476-52
Radiant Floral
Mullberry



9477-52*
Blossom Bursts
Mullberry



9478-15
Blossoms
Lavendar



9479-53
Ogee
Purple/Clay



9480-55
Ripples
Purple



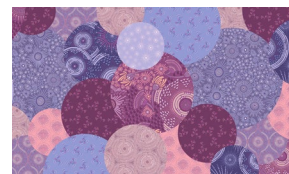
9481-57
Seeds
Purple



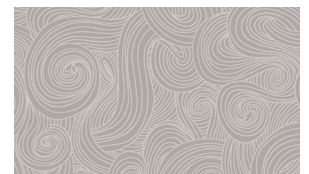
9484-50
Star Bursts
Lilac



9484-59
Star Bursts
Indigo



9485-57
Eclipses
Mulberry/Purple



1351-Lava
Just Color
Lava

Studioe Fabrics

148 West 37th Street - New York, NY 10018 - Tel: 800-294-9495 - Fax: 212-679-4578 - www.studioefabrics.net