

Quilt Size: 60 x 72 (1.50m x 1.82m)

Skill Level: Advanced Beginner

Slivers and Stars Quilt

Designed by Lauren Smith of Tourmaline and Thyme
www.tourmalinethymequilts.com

Slivers and Stars Quilt Ordering Guide

SKU	Yards	Meters	6 Kits	12 Kits
 9163-78	3/8 yds	0.34m	1 bolt	1 bolt
 9164-88	3/4 yds	0.69m	1 bolt	1 bolt
 9165-07	11/3 yds	1.22m	1 bolt	2 bolts
 9167-70	3/4 yds	0.69m	1 bolt	1 bolt
 9168-77	11/2 yds	1.37m	1 bolt	2 bolts
 9170-11	3/4 yds	0.69m	1 bolt	1 bolt
 9172-18	1 yd	0.91m	1 bolt	1 bolt

44" Backing Fabric Option

9168-77	4 yds	3.66m	2 bolts	4 bolts
---------	-------	-------	---------	---------

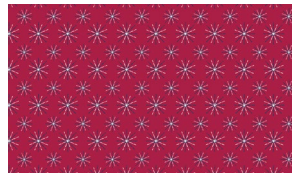
* Indicates binding fabric.

FQ = 18" x 22" (0.45m x 0.55m)

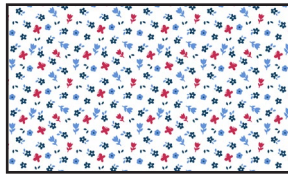
All fabric quantities are based on 15yd bolts unless otherwise indicated.



9163-78
Floral
Navy



9164-88
Fireworks
Red



9165-07
Ditsy Blooms
White/Multi



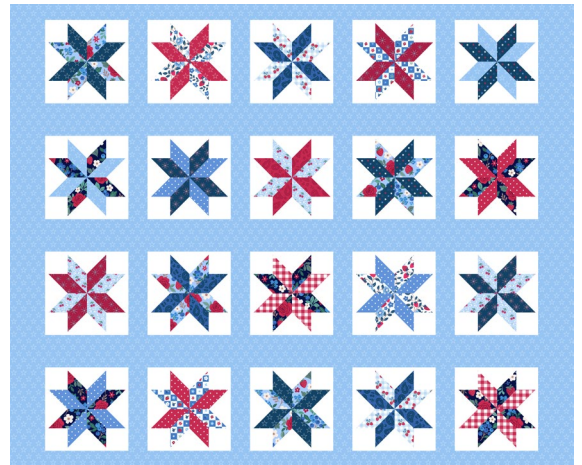
9167-70
Strawberry Vines
Cornflower/White



9168-77
Paisley
Blueberry



9170-11
Stitchy Stars
Sky



9172-18
Cheater
Sky/Red