

# You Had Me At Stitches

by Jennifer Heynen



Quilt Size: 56 1/2" x 69" (1.43m x 1.75m)

Skill Level: Intermediate

Quilter's Garden

Designed by Pinetree County Quilts  
[www.pinetreecountryquilts.com](http://www.pinetreecountryquilts.com)

## Quilter's Garden Ordering Guide

| SKU  | Yards    | Meters | 6 Kits | 12 Kits |
|--|----------|--------|--------|---------|
|  9510-62  | 1 yd     | 0.91m  | 1 bolt | 1 bolt  |
|  9511-44  | 1/2 yds  | 0.46m  | 1 bolt | 1 bolt  |
|  9512-69  | 5/8 yds  | 0.57m  | 1 bolt | 1 bolt  |
|  9513-61* | 11/3 yds | 1.22m  | 1 bolt | 2 bolts |
|  9514-16  | 1/2 yds  | 0.46m  | 1 bolt | 1 bolt  |
|  9515-22  | 1/3 yds  | 0.30m  | 1 bolt | 1 bolt  |
|  9516-44  | 13/4 yds | 1.60m  | 1 bolt | 2 bolts |
|  9517-28  | 1/3 yds  | 0.30m  | 1 bolt | 1 bolt  |

### 44" Backing Fabric Option

|         |           |       |         |         |
|---------|-----------|-------|---------|---------|
| 9511-44 | 3 3/4 yds | 3.43m | 2 bolts | 4 bolts |
|---------|-----------|-------|---------|---------|

\* Indicates binding fabric.

FQ = 18" x 22" (0.45m x 0.55m)

All fabric quantities are based on 15yd bolts unless otherwise indicated.



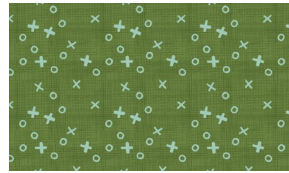
9510-62  
Large Hexie  
Multi



9511-44  
Large Floral  
Burnished Cream



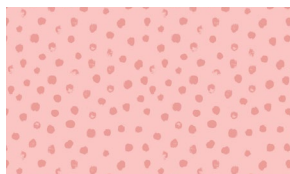
9512-69  
Scattered Leaves  
Dark Green



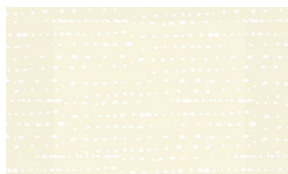
9513-61\*  
Criss Cross Applesauce  
Pistachio



9514-16  
Daisies  
Seafoam



9515-22  
Dots  
Dusty Rose



9516-44  
Running Dots  
Burnished Cream



9517-28  
Painted Stripe  
Candy Cane Red