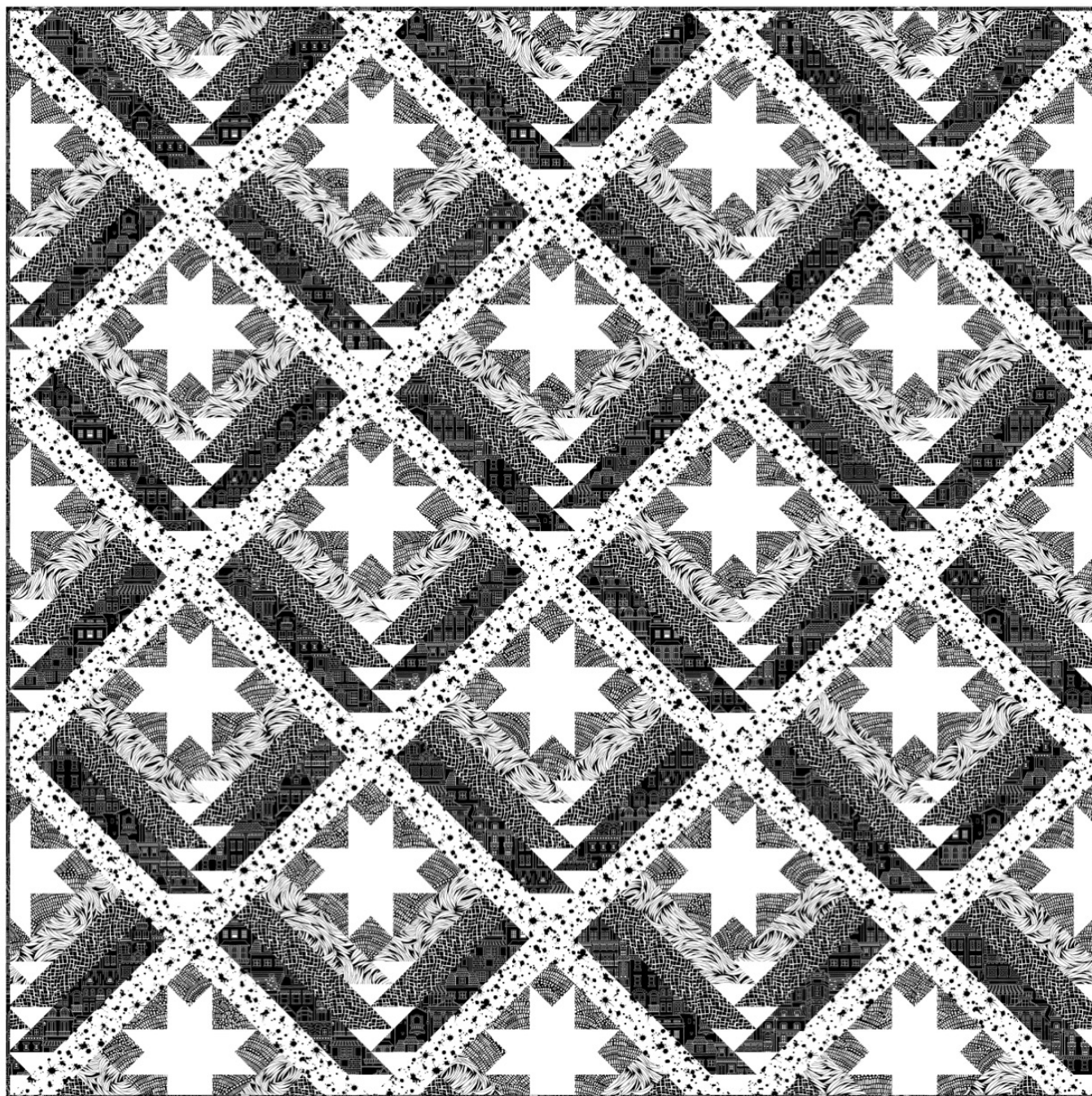


# All or Nothing

by Chelsea DesignWorks



Quilt Size: 68" x 68" (1.72m x 1.72m)

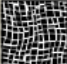


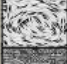

Skill Level: Intermediate

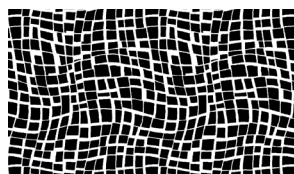
## Mountain Valley Quilt

Designed and sold by Julie Burton of Running Stitch Quilts  
[www.runningstitchquilts.com](http://www.runningstitchquilts.com)



## Mountain Valley Quilt Ordering Guide

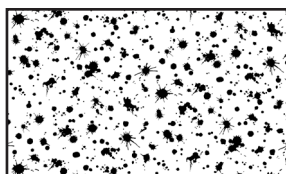
SKU		Yards	Meters	6 Kits	12 Kits
	8225-90	1 yd	0.91m	1 bolt	1 bolt
	8227-90*	2yds	1.83m	1 bolt	2 bolts
	8229-09	1 1/2 yds	1.37m	1 bolt	2 bolts
	8230-09	1 yd	0.91m	1 bolt	1 bolt
	8232-90	1 yd	0.91m	1 bolt	1 bolt
	White Sugar-9 (10-yard bolt)	1 2/3 yds	1.52m	2 bolts	3 bolts
Backing Fabric Option					
44"	8231-09	4 yds	3.66m	2 bolts	4 bolts
118"	8247-09	2 yds	1.83m	1 bolt	2 bolts
* Indicates binding fabric. FQ = 18" x 22" (0.45m x 0.55m) All fabric quantities are based on 15yd bolts unless otherwise indicated.					



8225-90  
Wavy Grid  
Black/White



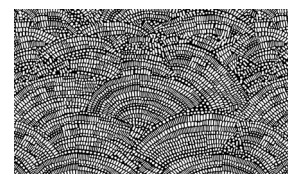
8227-90\*  
Town Center  
Black/White



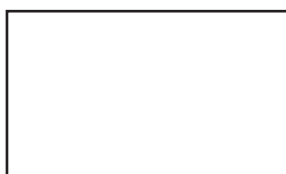
8229-09  
Splashes  
White/Black



8230-09  
Medium Swirl  
White/Black



8232-90  
Mosaic Fan  
Black/White



White Sugar-9  
Peppered Cottons  
White Sugar