

Sea Bright Quilt



Finished Size of Project: **71" x 83" (1.80m x 2.11m)**

Fabric Collection Name and Designer: **A Drop in the Ocean by Cathy Walters**

Technique: **Pieced**

Project Designed by: **Denise Russell of Pieced Brain**

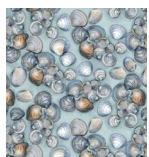
Skill Level: **Advanced Beginner**

Sea Bright Quilt

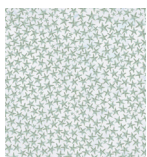
Fabric Requirements

DESIGN	COLOR	ITEM ID	YARDAGE
(A) Clambake	Slate	8807-79	½ yard (0.46m)
(B) Starfish Packed	Pearl	8808-11	½ yard (0.46m)
(C) Octopus Toss	Slate	8810-79	½ yard (0.46m)
(D) Tentacle Geometric	Jade	8811-69	1⅝ yards (1.49m)
(E) Tiny Seahorses	Mint	8812-78	½ yard (0.46m)
(F) Sea Turtles	Egyptian	8814-72	½ yard (0.46m)
(G) Water Textures	Ice	8815-17	⅞ yard (0.80m)
(H) Tail Chevron	Slate	8817-79*	⅔ yard (0.61m)
(I) Sealife Toss	Midnight	8818-74	1¼ yards (1.14m)
(J) Peppered Cottons	White	White Sugar-9	4¼ yards (3.89m)

* includes binding



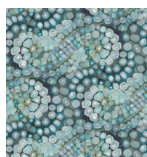
(A)



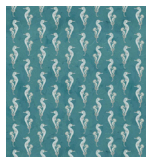
(B)



(C)



(D)



(E)



(F)



(G)



(H)



(I)



(J)

Backing (Purchased Separately)

44" (1.12m) wide

Dollars and Stars

Slate

8813-79

5⅞ yards (4.69m)

OR

108" (2.74m) wide

2¼ yards (2.06m)



Backing
44"

All possible care has been taken to ensure the accuracy of this pattern. We are not responsible for printing errors or the manner in which individual work varies.

Please read the instructions carefully before starting this project. If kitting it is recommended a sample is made to confirm accuracy.

All free projects are intended to remain free and are not for resale.

Additional Materials:

- Batting 79" x 91"
- Thread and sewing supplies

Cutting Instructions

Notes:

- Please make sure to check *studiofabrics.net* for pattern updates prior to starting the project.
- All strips are cut across the width of fabric (WOF) from selvage to selvage edge unless otherwise noted.

Fabrics A, C, and E, from each cut:

(1) 12½" x WOF; subcut (3) 12½" squares

Fabrics B and F, from each cut:

(1) 12½" x WOF; subcut (2) 12½" squares

Fabric D, cut:

(1) 12½" x WOF; subcut:

(2) 12½" squares

(12) 2½" x 4½" rectangles

(7) 4½" x WOF; subcut (108) 2½" x 4½" rectangles, total of 120

Fabric G, cut:

(10) 2½" x WOF

Fabric H, cut:

(8) 2½" x WOF for binding

Fabric I, cut:

(8) 4½" x WOF for border 2

Fabric J, cut:

(10) 6½" x WOF; subcut (60) 6½" squares

(8) 4½" x WOF; subcut (60) 4½" squares

(10) 2½" x WOF

(7) 2" x WOF for border 1

SEWING

Notes: All seam allowances are $\frac{1}{4}$ " (0.64cm). Sew pieces with right sides together. Press seam allowances open unless otherwise indicated.

1. Sew a $2\frac{1}{2}$ " **Fabric G** strip to a $2\frac{1}{2}$ " **Fabric J** strip to make a strip set. Press the seam toward the darker fabric. Repeat to make ten strip sets. Crosscut the strip sets into (120) $2\frac{1}{2}$ " segments. Sew the segments in pairs and press the seams open. Make (75) $4\frac{1}{2}$ " units (**Fig. 1**).

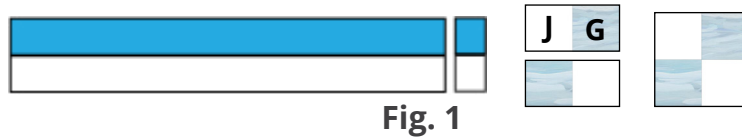


Fig. 1

2. Sort (120) $2\frac{1}{2}$ " x $4\frac{1}{2}$ " **Fabric D** rectangles into two groups of 60 units, Left and Right. Draw a diagonal line on the wrong side of the **Fabric D** rectangles of the Left group, from the top left corner to the bottom right corner, as shown. Draw a diagonal line on the wrong side of the rectangles of the Right group, from the top right corner to the bottom left corner, as shown (**Fig. 2**).

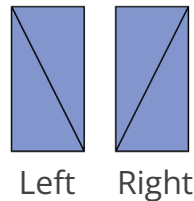


Fig. 2

3. Gather the $4\frac{1}{2}$ " **Fabric J** squares. Mark $2\frac{1}{2}$ " to the right of the top left corner. Place a rectangle from the Left group on a **Fabric J** square, aligning the diagonal line with the mark and bottom left corner as shown. Sew on the drawn line, trim the seam allowance to $\frac{1}{4}$ ", flip the new corner away from the square, and press. Mark $2\frac{1}{2}$ " to the left of the top right corner. Place a rectangle from the Right group onto the unit, aligning the diagonal line with the mark and bottom right corner. Sew, trim, and press as before. Repeat to make (60) $4\frac{1}{2}$ " star points (**Fig. 3**).

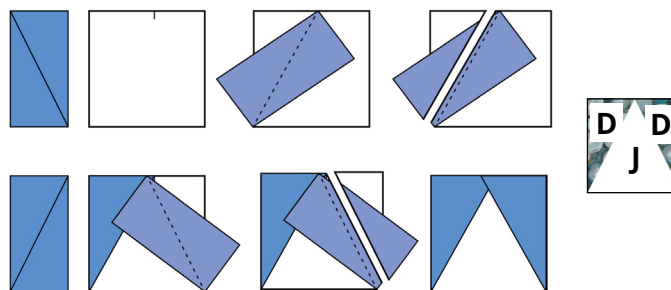


Fig. 3

All possible care has been taken to ensure the accuracy of this pattern. We are not responsible for printing errors or the manner in which individual work varies.

Please read the instructions carefully before starting this project. If kitting it is recommended a sample is made to confirm accuracy.

All free projects are intended to remain free and are not for resale.

4. Sew a step 1 unit between two step 3 star points, noting fabric orientation. Press the seams toward the center. Make 15 center rows (**Fig. 4**).

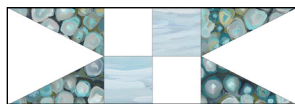


Fig. 4

5. Sew a step 3 star point between two step 1 units, as shown. Press the seams away from the center. Repeat to make 30 rows. Sew a row to the top and bottom of the step 4 center rows to make (15) 12½" blocks. Press the seams open (**Fig. 5**).

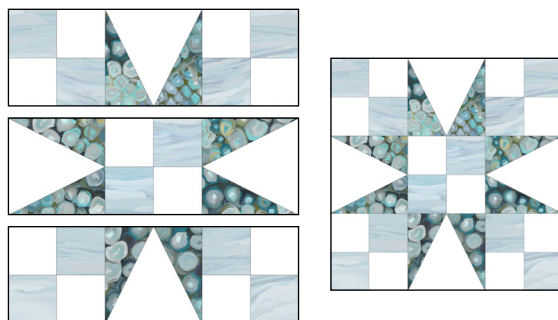


Fig. 5

6. Draw a diagonal line on the wrong side of the 6½" **Fabric J** squares. With right sides together, place a marked **Fabric J** square on a corner of a 12½" **Fabric A** square and stitch on the drawn line. Repeat with the opposite corner of the same square. Trim the seam allowances to ¼" and press open toward the corners. Similarly, sew two **Fabric J** squares to the other corners of the **Fabric A** square. Make (3) 12½" blocks. Repeat with the remaining 6½" **Fabric J** squares and assorted 12½" squares to make three blocks each of **Fabrics C and E**, and two blocks each of **Fabrics B, D, and F** for a total of 15 assorted blocks (**Fig. 6**).

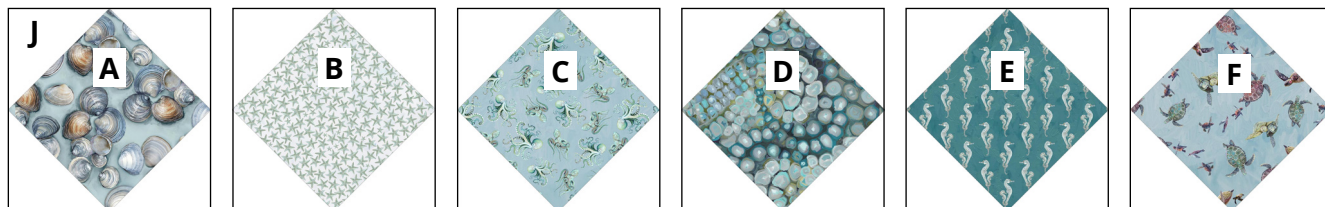
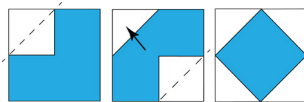


Fig. 6

All possible care has been taken to ensure the accuracy of this pattern. We are not responsible for printing errors or the manner in which individual work varies.

Please read the instructions carefully before starting this project. If kitting it is recommended a sample is made to confirm accuracy.

All free projects are intended to remain free and are not for resale.

QUILT TOP ASSEMBLY

Note: Follow the Quilt Layout Diagram (page 7) while assembling the quilt top.

7. Lay out the blocks in 6 rows of 5 blocks. Sew the blocks together and press the seams in opposite directions from row to row.
8. For border 1, sew the (7) 2" **Fabric J** strips together end to end using diagonal seams. Measure the vertical length of the quilt top through the center and cut two border strips to that length. Sew one strip to each side of the quilt top and press the seams toward the borders. Measure the width of the quilt top through the center. Cut two border strips to that length and sew one to the top and the other to the bottom. Press the seams toward the borders.
9. Repeat step 8 with the (8) 4½" **Fabric I** strips to make and add border 2.

FINISHING

10. Sew together the (8) 2½" **Fabric H** binding strips end to end using diagonal seams. Press the seams open. Press the binding strip in half with the wrong sides together.
11. Layer the backing (wrong side up), batting, and quilt top (right side up). Baste the layers together and quilt as desired. Trim excess batting and backing even with the top of the quilt.
12. Leaving an 8" tail of binding and beginning along an edge of the quilt top, matching the raw edges of the binding to the raw edges of the quilt. Sew the binding to the outside edge around all four sides and miter corners. Stop sewing approximately 12" from where you started and backstitch.
13. Lay both loose ends of the binding flat along the quilt edge. Where these two loose ends meet, fold them back onto themselves and press to form a crease. Using this crease as your stitching line, sew the two open ends of the binding together, with the right sides matching. Trim the seam to ¼" and press it open. Finish sewing the binding to the quilt.
14. Turn the binding over the raw edge to the back of the quilt and hand or machine stitch in place.

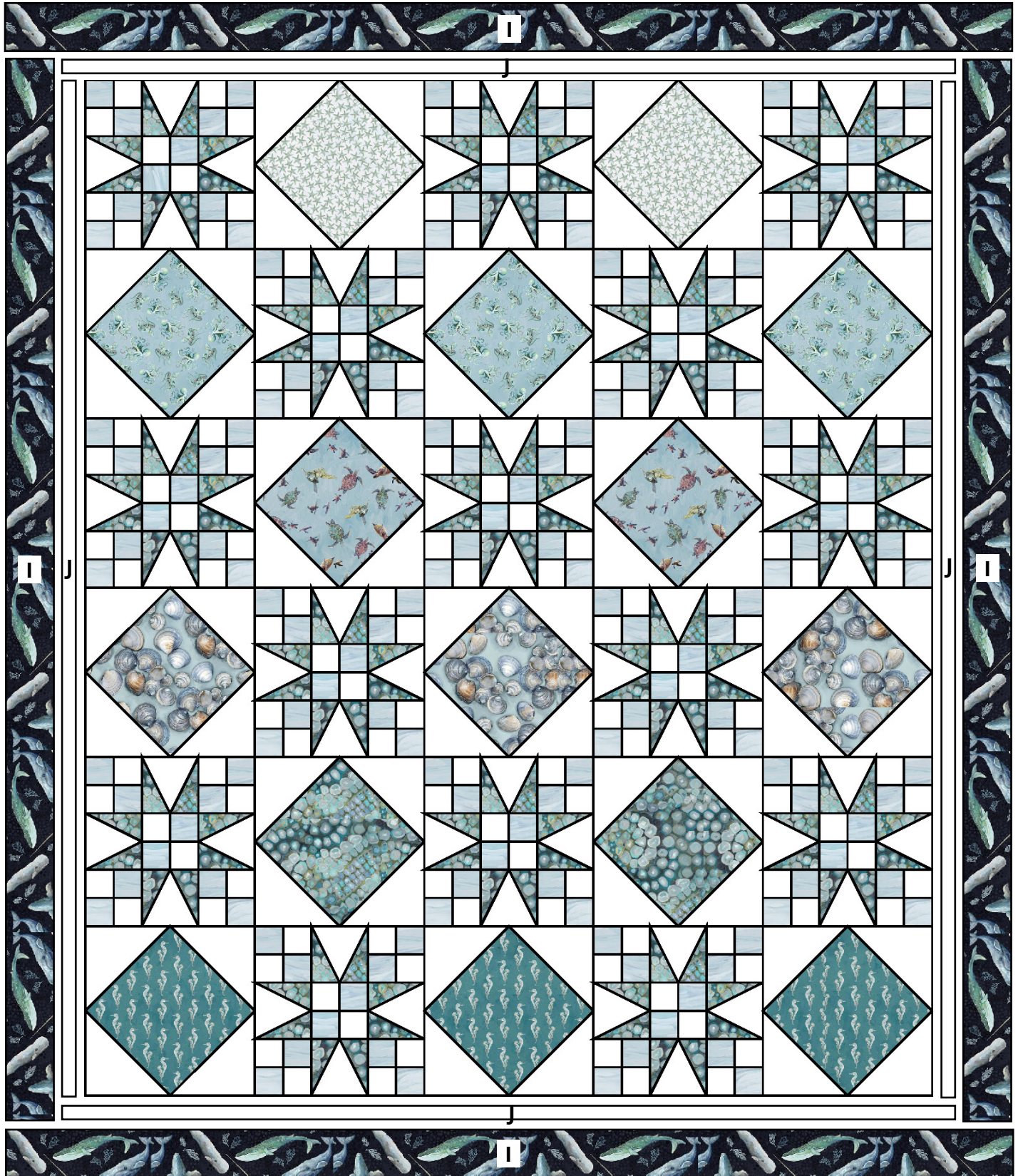
All possible care has been taken to ensure the accuracy of this pattern. We are not responsible for printing errors or the manner in which individual work varies.

Please read the instructions carefully before starting this project. If kitting it is recommended a sample is made to confirm accuracy.

All free projects are intended to remain free and are not for resale.

Sea Bright Quilt

Quilt Layout



All possible care has been taken to ensure the accuracy of this pattern. We are not responsible for printing errors or the manner in which individual work varies.

Please read the instructions carefully before starting this project. If kitting it is recommended a sample is made to confirm accuracy.

All free projects are intended to remain free and are not for resale.